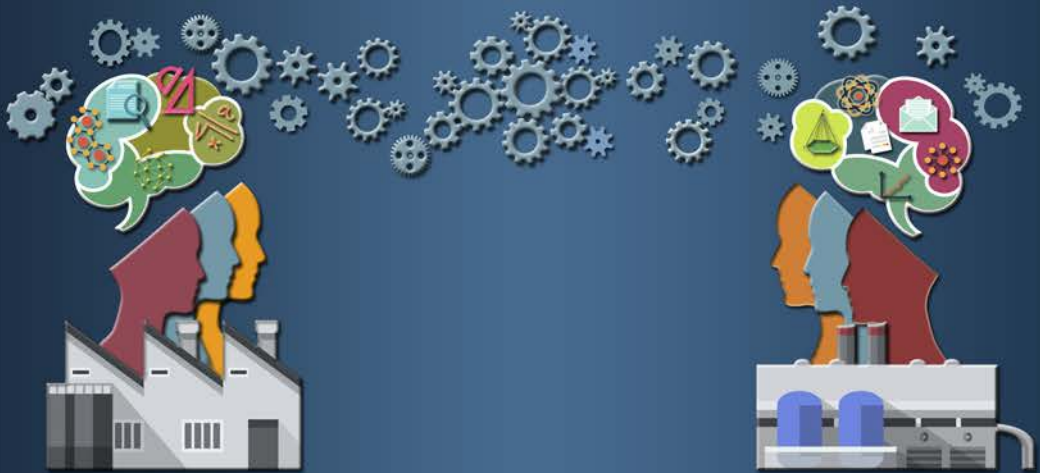


# Knowledge Integration with Customers in Collaborative Product Development

Mohammad Hossein Eslami



## **FACULTY OF SCIENCE AND ENGINEERING**

Linköping Studies in Science and Technology, Dissertations No. 1820, 2017  
Department of Management and Engineering

Linköping University  
SE-581 83 Linköping, Sweden

[www.liu.se](http://www.liu.se)